

GUIDE AURORA POWER ONE RS485 → USB PC

The guide is very simple. I enclose a simplified diagram and photos.

I to prevent loss of signal I used a pair of cables for each signal even if the distance between the inverter and my pc is low.

It is recommended to connect the inverter when it is turned off and check with the event of a short tester before connecting.

Be sure to insert the terminal block without touching any screws or metal parts when the inverter is running.

1-Connect the blue wire to the A connector of the converter rs485 connector T / R + inverter

2-Connect the green wire to the B connector converter rs485 connector T/R- inverter

3-Connect the orange wire to the GND connector converter rs485 connector RNT inverter

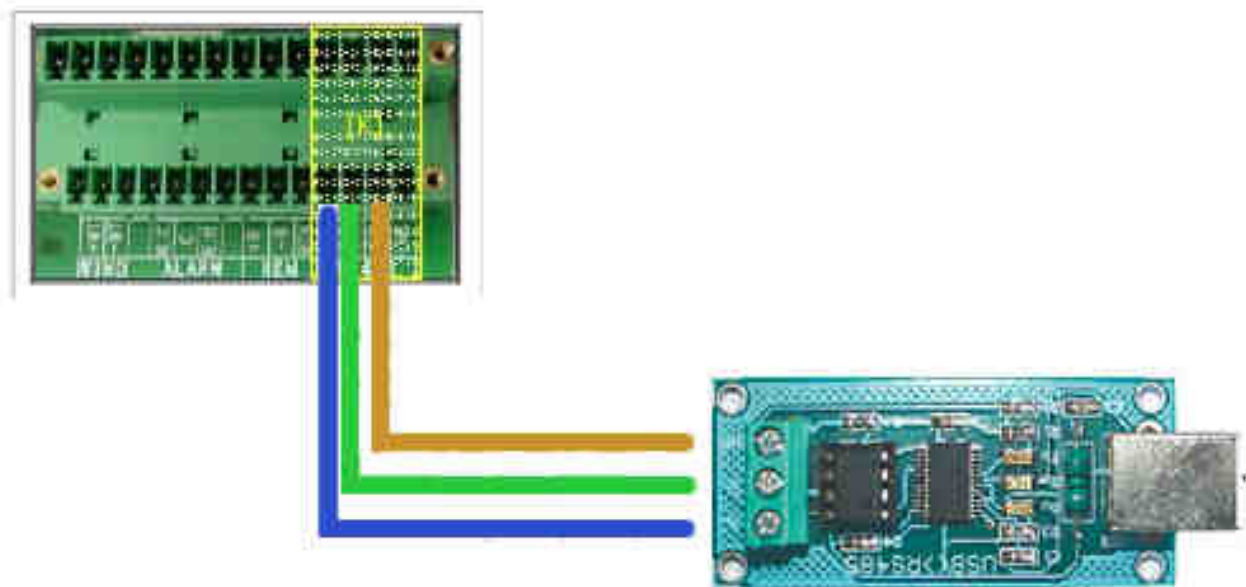
4-Put off the 120 ohm resistor inverter

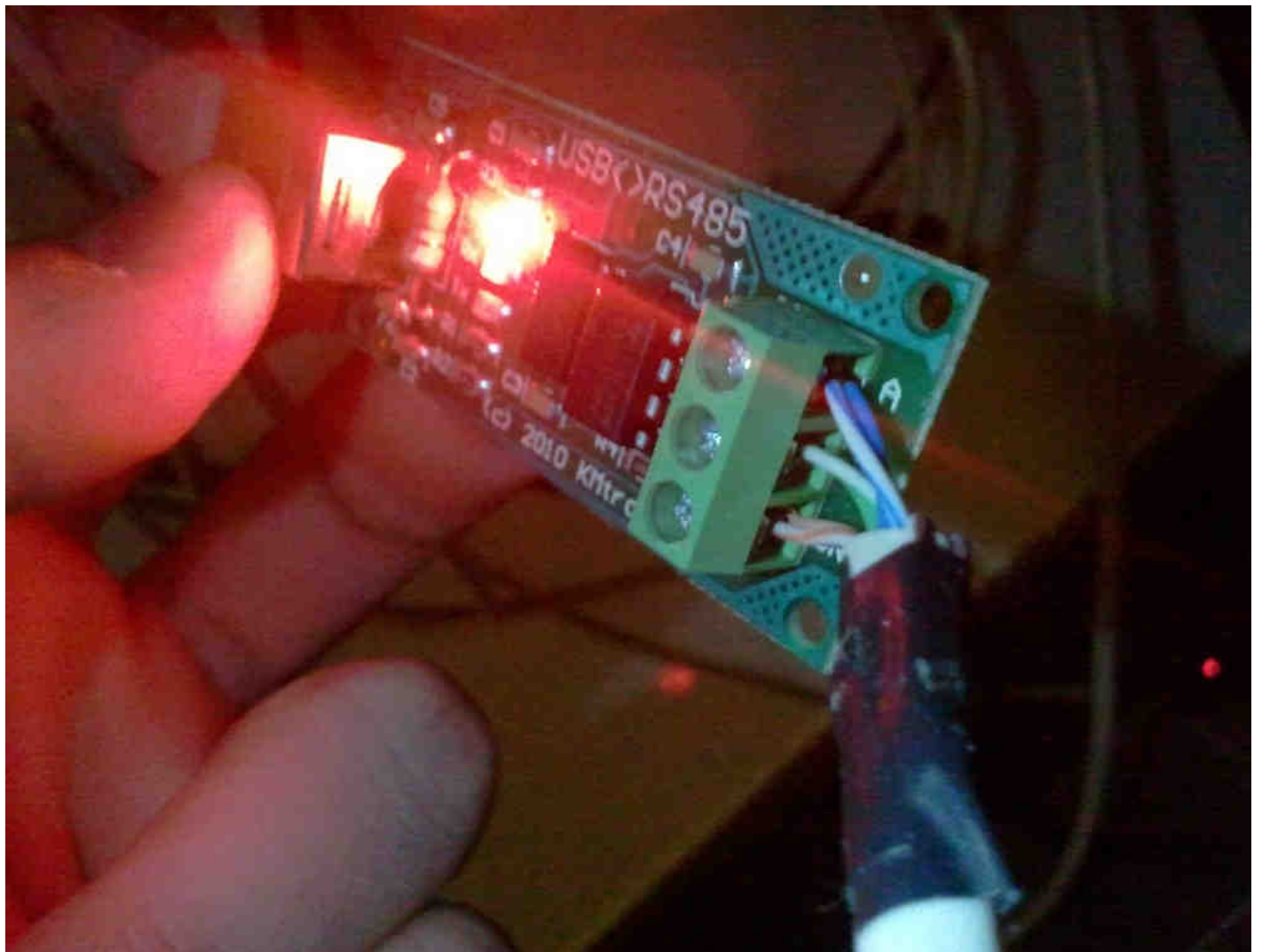
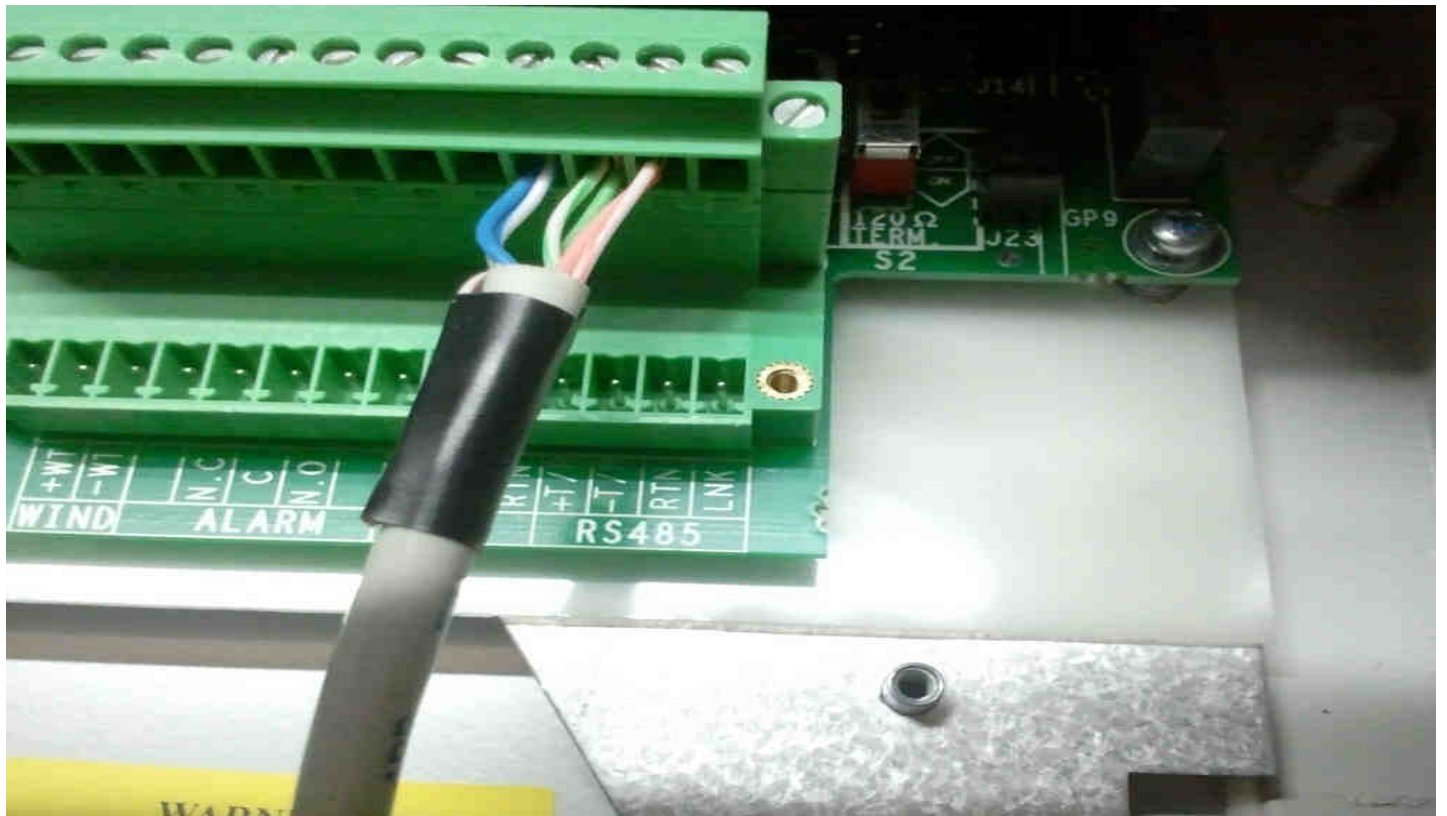
5-Activate the remote control in the control panel of the inverter (I do not know if this is necessary)

I guess the USB -> RS485 is properly installed on the PC. At this point you can use the serial port, which installs the software to download the data with the original aurora or other software.

The serial port is set to 19200 baud 8N1.

I enclose also the graph of a day of use.







<http://www.energeticambiente.it/tecnica-componentistica-e-installazione/14736016-aurora-web-data-logger-open-source.html>

<http://pcnet.homepc.it/solare/index.html>

