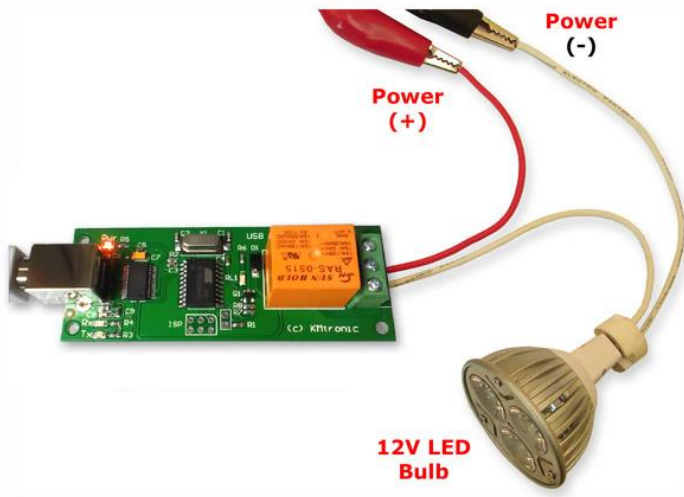


KMtronic LTD

USB One Channel Relay PCB



A general purpose Relay board for connection to a PC's USB port using VCP (Virtual COM port). Control devices using your PC. USB Relay controller allows a PC to control external devices using simple RS232 commands. Relay is fully powered from the USB bus.



Manufacturer:

KMtronic LTD

Features:

- Fully assembled and tested
- Fully powered from USB
- For 12V/24VDC 15A or 120V/220V AC at 10A max.
- Can be used with [LabVIEW](#), [ProfiLab](#), DAQFactory, TestPoint, DASyLab, VEE

USB to serial interface:

FTDI FT232RL Chip

www.ftdichip.com/Products/ICs/FT232R.htm

Complete including:

One USB relay board

Dimensions (PCB board):

90 mm / 35 mm

Relay specifications:

Relays have Normally Open (NO) and Normally Closed (NC) Contacts each capable of switching max:

- 12VDC/15A
- 24VDC/15A
- 125VAC/15A
- 250VAC/10A

Relay datasheet:

www.kmtronic.com/manuals/RAS.pdf

Supply:

Fully powered from USB

Operation Range:

0°C to +80°C

Drivers :

All Windows systems, Windows RT, Linux,
Mac OS 8, Mac OS 9, Mac OS X,
Android, Raspberry Pi, Arduino ADK,
Arduino with USB Host Shield...

www.ftdichip.com/FTDrivers.htm

Communication Parameters:

8 Data, 1 Stop, No Parity

Baud rate : 9600

Commands:

"FF 01 00" (HEX) or "255,1,0" (DEC) - OFF command

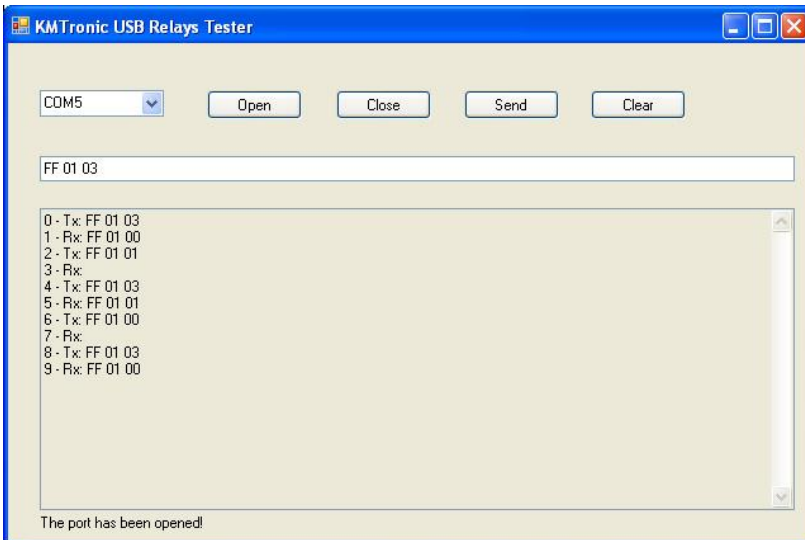
"FF 01 01" (HEX) or "255,1,1" (DEC) - ON command

"FF 01 03" (HEX) or "255,1,3" (DEC) - Status request

NOTE : Each command consists in 3 binary bytes (shown in hexadecimal below) without any space!

Windows Test Software:

www.kmtronic.com/kmtronic-usb-relay-test-software.html



BOX Version:

www.kmtronic.com/usb-one-channel-relay-box.html

Customers projects:

www.kmtronic.com/kmtronic-customers-projects.html

Software Examples:

www.kmtronic.com/usb-rs232-rs485-relays.html

www.KMtronic.com